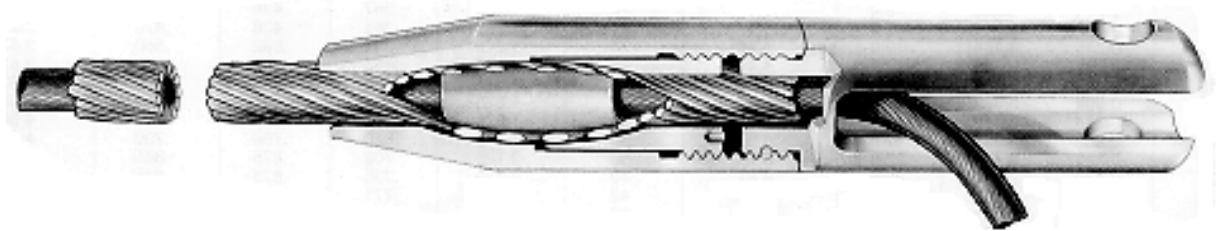


# DYNA-GRIP<sup>®</sup> Termination

- *Use on Wire Rope & E/M Cable*
- *Proven, Superior Performance*
- *Full Strength*
- *Corrosion Resistant*



## PROVEN PERFORMANCE

Exhaustive tests performed by our laboratory and at-sea use since the early seventies, conclusively demonstrate the DYNA-GRIP<sup>®</sup> Termination improves cable system survivability and reduces costly repair and downtime. Valuable experience gained from use in oceanographic, military, offshore petroleum, and ROV systems proves the DYNA-GRIP<sup>®</sup> Termination excels in reliability and long life.

## FULL- STRENGTH

Engineered to hold 100 percent of the cable's rated break strength when applied on bare metal strength members. The DYNA-GRIP<sup>®</sup> Termination protects against fatigue of your cable system under severe dynamic conditions.

## EASY TO USE

No cable preparation, special training or tools required. To install, simply slip the housing down the cable and

out of the way. Slide the insert in place. Then wrap the helical rods over the insert and cable. Move the housing back and screw in the retainer to seat the rods and insert. Pour in epoxy resin secure the whole assembly by screwing the clevis adaptor into place. Allow the epoxy to cure.

## UNIQUE

The complete cable passes through the DYNA-GRIP<sup>®</sup> Termination intact. Helical gripping rods hold the cable with low compression and friction forces distributed along the length of the rods. This unique helical concept eliminates concentrated stresses in the cable at the termination, reducing the potential for failure. Tensile load transfers gradually from cable to helical gripping rods. Within the termination, tensile load transfers from helical rods to the housing relieving the cable of all tensile stress. The cable is protected from

compression forces by the insert, therefore the full mechanical capability of the cable is realized.

## CORROSION RESISTANT

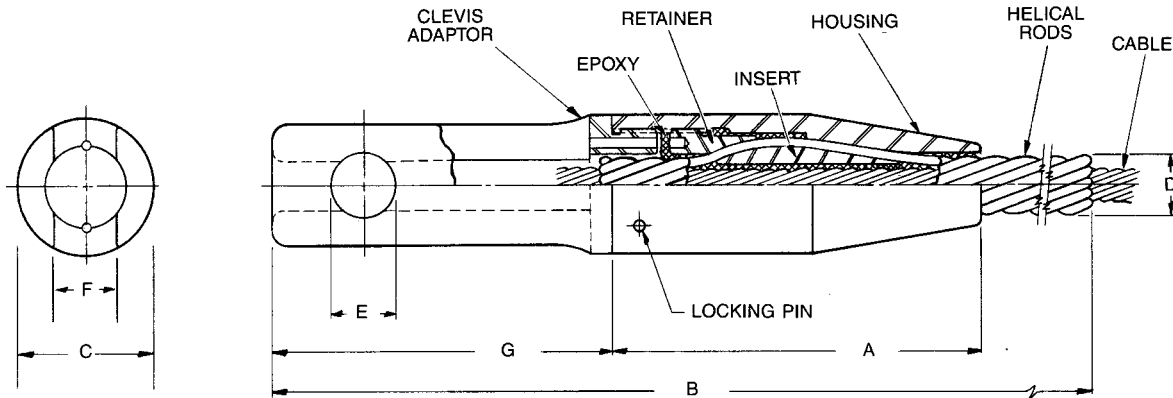
Standard kits are furnished in galvanized steel. Epoxy filler blocks the housing cavity against corrosive environments and locks internal components to prevent abrasion and noise. Upon special request, the DYNA-GRIP<sup>®</sup> Termination is available in a variety of corrosion resistant and non-magnetic materials such as 316 stainless steel, MONEL<sup>®</sup>, and NITRONIC<sup>®</sup> 50.

## ADDITIONAL PROTECTION AVAILABLE

For extended cable protection under conditions of severe bending, an EVERFLEX<sup>™</sup> Bending Strain Relief can be attached at the nose of the DYNA-GRIP<sup>®</sup> Termination. The EVERFLEX<sup>™</sup> Bending Strain Relief limits bending, consequently controlling stresses at the rigid termination point.

# DYNA-GRIP® Termination

Superior mechanical termination for electromechanical cable, optomechanical cable and wire rope.



## DYNA-GRIP® Termination Data & Dimensions

Model No.	Recommended Cable Range (in.)		Rated Holding Strength (K-Lbs)	Body Length w/o Adaptor (in.)		Total Length Including Rods (in.)	Body Diameter (in.)	Diameter Over Rods (in.)	Pin Diameter (in.)	Clevis Slot Width (in.)	Clevis Adaptor Length (in.)
	Min.	Max.		A	B						
114	0.194	0.209	6.4	3.47	19	1.125	.350	.438	.470	2.90	
115	0.210	0.226	6.4	3.47	20	1.125	.367	.438	.470	2.90	
116	0.227	0.244	7.0	3.47	21	1.125	.385	.438	.470	2.90	
117	0.245	0.264	9.3	4.46	24	1.375	.444	.562	.560	3.63	
118	0.265	0.285	9.3	4.46	26	1.375	.465	.562	.560	3.63	
119	0.286	0.308	10.2	4.46	27	1.375	.488	.562	.560	3.63	
120	0.309	0.333	14.4	5.57	31	1.875	.565	.750	.700	4.66	
121	0.334	0.359	16.0	5.57	33	1.875	.571	.750	.700	4.66	
122	0.360	0.388	17.6	5.57	34	1.875	.620	.750	.700	4.66	
123	0.389	0.418	22.6	6.87	39	2.125	.702	.875	.845	5.70	
124	0.419	0.451	22.6	6.87	40	2.125	.735	.875	.845	5.70	
125	0.452	0.487	24.9	6.87	42	2.125	.771	.875	.845	5.70	
126	0.488	0.525	35.2	8.45	49	2.625	.879	1.000	1.105	6.90	
127	0.526	0.566	35.2	8.45	51	2.625	.920	1.000	1.105	6.90	
128	0.567	0.611	38.7	8.45	52	2.625	.965	1.000	1.105	6.90	
129	0.612	0.658	45.3	10.32	59	3.375	1.103	1.250	1.365	8.70	
130	0.659	0.710	49.9	10.32	62	3.375	1.128	1.250	1.365	8.70	
131	0.711	0.765	49.9	10.32	65	3.375	1.183	1.250	1.365	8.70	
132	0.766	0.824	68.7	12.55	74	4.000	1.312	1.500	1.625	10.70	
133	0.825	0.888	68.7	12.55	76	4.000	1.376	1.500	1.625	10.70	
134	0.889	0.957	75.0	12.55	80	4.000	1.445	1.500	1.625	10.70	
135	0.958	1.032	81.2	15.13	88	4.500	1.520	1.750	1.875	12.90	
136	1.033	1.111	87.5	15.13	91	4.500	1.599	1.750	1.875	12.90	
137	1.112	1.197	87.5	15.13	96	4.500	1.685	1.750	1.875	12.90	

RHS= Rated Holding Strength

Consult PMI for use on jacketed cable applications

Metric Conversion:

inches x 25.40 = mm  
K-lbs x 4.448 = KN

### IMPORTANT ORDERING INFORMATION

DYNA-GRIP® Terminations are built to close tolerances. To insure satisfaction please specify rope or cable diameter, construction or type, rated breaking strength, and lay direction of outer strength members. Consult PMI for use on jacketed cables. For assistance in selecting correct products contact PMI Industries, Inc. or our sales representatives.



**PMI INDUSTRIES, INC.**

www.pmiind.com

AROD\_0503